

---

## Greenhouse Gas and Biodiversity Impact (GABI) and the Planet Tip Funding of Local Environment and Biodiversity Projects

### Welcome to GABI and the Planet Tip

This briefing is to support your understanding of the financial flows related to GABI and in particular the Planet Tip.

### 1. What is GABI

**GABI (an acronym for Greenhouse Gas and Biodiversity Impact) supports business and leisure become Planet Positive, by pricing the environmental impact of travel hospitality tourism, and then giving that amount back to nature.**

GABI engages your customers by providing a return and investment in Nature. **One meeting, one conference, one hotel room night and one dining experience at a time.**

GABI data and analysis is based on research by international organisations and academic institutions, including:

- UN,
- EU Environment Agency,
- Cornell University - Hospitality, Hotel departments
- University of Wales,
- UK Cabinet Office,
- Greenhouse Gas Protocol,
- Marine scientists,
- Food scientists
- and many others.

### 2. What is TLC?

TLC is an acronym for **Total Life Cycle**, but we often use **Tender Loving Care**... it is a United Kingdom based business that is supported by colleagues with over 25 years in tourism destination development for regions and countries, that uses economic algorithms and sustainability calculations based on national policy making for the UK and International governments.

**TLC's mission is to ensure we truly value nature within tourism and hospitality.**

### 3. What is Planet Positive?

Planet Positive means that an activity or service has a net benefit for the planet, the environment, and ecosystems. With particular emphasis on tackling climate change and the loss of biodiversity.

#### 4. What is the Planet Tip?

The Planet Tip assesses environmental harm impacts as a financial cost. It is based on the quantitative information that you type into GABI, then calculated based on international data that assesses the environmental harm impact of goods and services within travel tourism and hospitality

The Planet Tip is the amount to pay back to Nature based on what has been taken from the environment, but that is not included in the price you normally pay for goods and services.

It is a way to say thank you, and a return to Nature for her excellent service, for the tourism and hospitality experience - whether that is the travel, the lovely food and drink, the air and even the views and scenery outside.

For example. The GABI tool identified that a single serving of lamb for dinner, should have an additional 60 cents (US) on each serving of lamb to pay towards the carbon dioxide, methane, nitrous oxide, land use, and impacts on fresh water and marine life of that lamb dinner, that has not been factored into its restaurant price. These per diner or guests' costs personalise each customer or groups efforts towards tackling climate change and biodiversity loss

#### 5. Where does the Planet Tip money go?

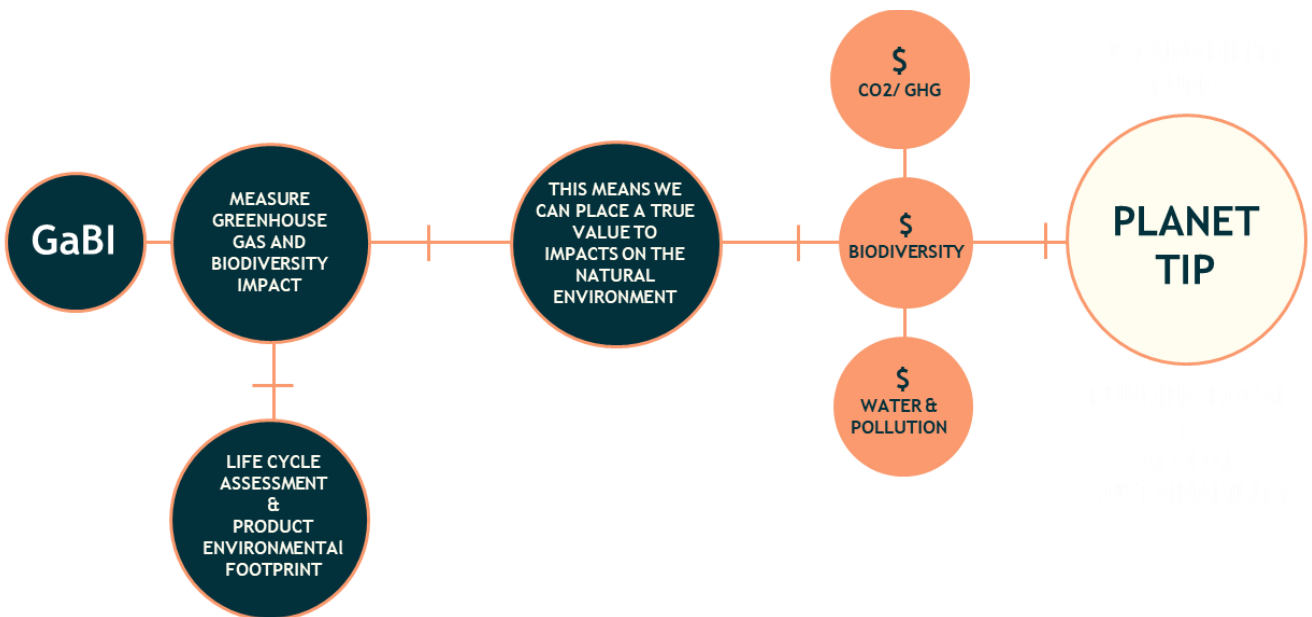
The money collected from guests, goes to environmental protection and restoration projects, and towards funding projects that improve sustainability. These verified projects are based locally or globally depending on the customer preferences.

Global Projects include UN registered natural protection projects in Kenya and the Democratic Republic of Congo, coral reef restoration projects in Australia, bird sanctuary projects in El Salvador.

We are very interested in funding local projects towards local wildlife preservation and restoration, including local environmental education projects.

### GaBI - GREENHOUSE GAS and BIODIVERSITY IMPACT

The Tool that Measures and Prices per Guest the Impact on Nature of Travel, Hospitality and Tourism



GaBI conversion data is supported by:



Cabinet Office

European Environment Agency



GREENHOUSE GAS PROTOCOL



## 6. Who controls the Money? iTravwell CIC

The tip: money is accepted and controlled by **iTravwell Community Interest Company**, a not-for-profit company that is required to conform to United Kingdom CIC legal requirements in relation to structure, purpose and operations, the company must ensure that it exists to benefit the community rather than private shareholders. It is registered with Companies House - Registration Number: 14236070.

iTravwell is separate and distinct from TLC and was set up to receive and deliver the Planet Tip for the benefit of society.

The iTravwell board decides which initiatives and projects fulfil its missions and purpose, to ensure resources and projects that protect, regenerate and restore nature.

## 7. The Planet Tip supporting your Local Area Protect, Regenerate and Restore Nature – aligned to the Equator Principles

It is the responsibility and role of iTravwell CIC, to govern, coordinate and allocate funding to verified local or global projects, that can utilise Planet Tip resources to provide a net positive value to Nature.

Our preferred model for resourcing nature is a decentralised one, where we keep a short journey between governance and financial resource and the principal funding source. Put bluntly, what gets given in that region or country should be spent in that region or country. How do we ensure this?

We develop partnerships with local environmental NGO's or charities that have an established track record of financial integrity and trust, with a board of local trustees, mirroring our global team

**For Example** - In El Salvador we aligned with **SalvaNATURA**, a local not for profit whose mission is to protect and regenerate the regional environment. SalvaNATURA is chaired by an ex-Minister of the Environment of El Salvador, and board members are drawn from the local community including indigenous leaders. Protecting and regenerating the rainforest has supported wider biodiversity improvements across a range of eco-systems. A recent SalvaNATURA's success has been the return of a hummingbird not seen for many decades.



## For Example

In London UK we have aligned with the new multi-faith Jain Centre project, where we have agreed that the Planet Tip in that part of North London supports an Environmental Education and Resource Centre for Young People within their new building. The centre will be a 3-storied (30,000 sq. ft), with the ground and first floor available as a community resource, the centre is in construction and will complete and opened in third quarter of 2023.

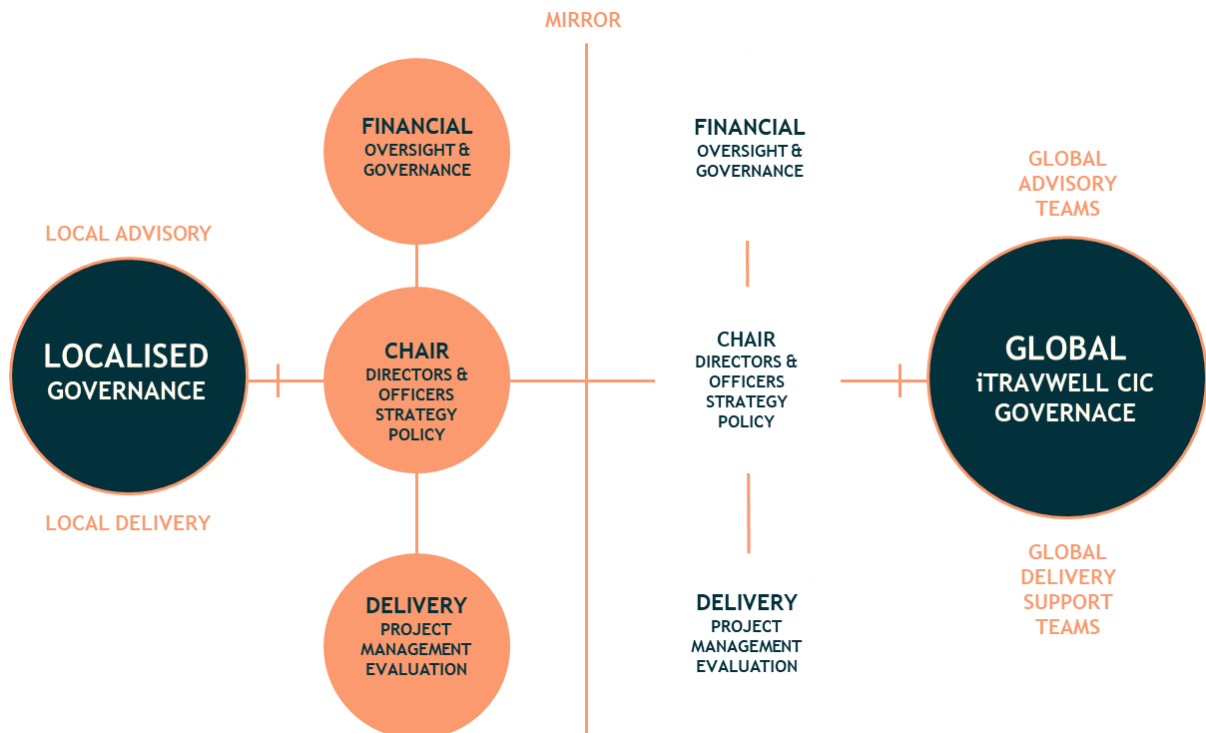
## Jain Centre Environment Education and Resource

Colindale London UK  
opening third quarter 2023



## Governance, Support and Engagement Model

We believe that local people know best their local environment, and what works best for their local biodiversity and ecosystems. Success for nature comes with the successful engagement of local populations, the most well-meaning international organisation will fail if it tries to micro-manage or remove local communities from protecting and regenerating nature. However, there will be areas where learning can be shared between parties



For any further enquiries and follow up training on the science behind GABI, the Planet Tip and our specialised hotel, MICE (Meeting, Incentives, Conferences and Exhibitions) sustainability tools, please feel free to contact TLC.

Our thanks to the TLC advisory team for developing GABI, and to you our colleagues in the world of Hotels, Travel, Hotels and Hospitality.

We hope you find using GABI and the Planet Tip informative and useful.



Warmest regards

Leo Downer and Nicki Page



TLC Harmony/ TLC Health Travel Ltd

